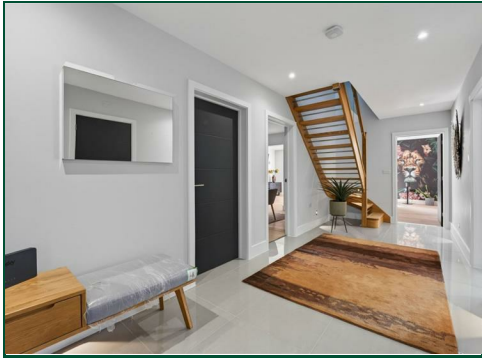




Bear Close

Earls Barton, Northamptonshire





Beare Close

Earls Barton

NN6 0QZ

£2,900 PCM

An exceptional three-bedroom dormer bungalow, situated at the end of a quiet cul-de-sac in the sought-after village of Earls Barton. Finished to a high standard throughout and offered fully furnished, this impressive home combines contemporary design with spacious, versatile living, ideal for modern family life.

Tenancy Information

- Deposit: £3,346.00 (1 Week Holding Deposit - £669.00)
- Smokers: Not Allowed
- Fully furnished
- Length of Tenancy: Long Term
- Available: Mid-End May

Additional information

- Council Tax Band: F
- Energy Efficiency Rating: B

Viewing

Viewing strictly by appointment – details below

Disclaimer

O'Riordan Bond Estate Agents Limited has not tested apparatus, equipment, fittings or services and so cannot verify they are in working order. The buyer is advised to obtain verification from their solicitor or surveyor.

O'Riordan Bond Weston Favell Lettings
01604 814400

lettingswestonfavell@oriordanbond.co.uk

